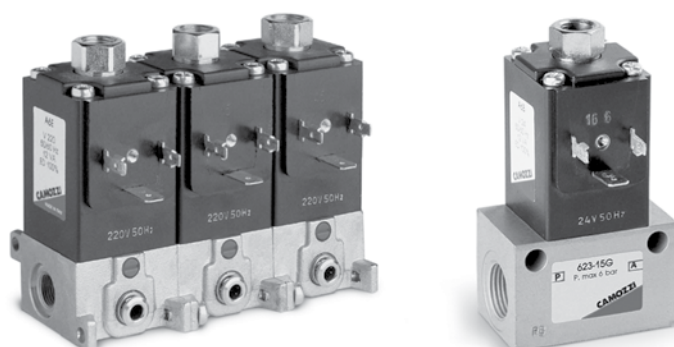


Directly operated solenoid valves Series 6

2/2 way - 3/2 way, NC and NO.
Ports G1/8 and G3/8 - cartridge $\varnothing 4$



The bodies of these valves can be used either individually or in manifolds. The latter are provided with G1/8 threaded ports or an inbuilt diameter 4 cartridge (G3/8 for 2 way only).

The solenoid valves Series 6 are available as 2/2 and 3/2 way, either NC or NO.
These directly operated solenoid valves can be used either with or without lubrication.

GENERAL DATA

| | |
|------------------------------|---|
| Valve functions | 2/2 - 3/2 NC or NO |
| Construction | poppet type |
| Materials | body = AL / brass seals = NBR (FKM on demand) others = stainless steel |
| Mounting | in any position |
| Operating temperature | 0 + 80°C (with dry air - 20°C) |
| Operating pressure | see tables |
| Nominal flow rate | Qn (see tables) |
| Nominal diameter | \varnothing (see tables) |
| Fluid | filtered air, without lubrication, inert gas. If lubricated air is used, it is recommended to use ISOVG32 oil. The lubrication should never be interrupted. |
| Voltage | AC standard: 24V, 50/60Hz 110V - 50/60Hz 230V - 50/60Hz DC standard: 24V |
| Voltage tolerance | AC + 10% -15% DC $\pm 10\%$ |
| Power consumption | AC at inrush = 19 VA, during operation = 12 VA DC 10 W |
| Duty cycle | ED 100% |
| Class of insulation | class H |
| Connector | Mod. 124-800 |
| Protection class | IP65 with connector DIN 43650/PG9 |

CODING EXAMPLE

| | | | | | | | | | |
|----------|----------|----------|----------|----------|------------|----------|----------|----------|----------|
| 6 | 3 | 8 | M | - | 105 | - | A | 6 | B |
|----------|----------|----------|----------|----------|------------|----------|----------|----------|----------|

| | |
|------------|---|
| 6 | SERIES: |
| 3 | NUMBER OF PORTS AND FUNCTIONS: 0 = interface 1 = 2 way NO 2 = 2 way NC 3 = 3 way NC 4 = 3 way NO |
| 8 | CONNECTION: 0 = interface 3 = G3/8 8 = G1/8 C = cartridge Ø 4 |
| M | M = manifold |
| 105 | TYPE OF BODY: 150 = threaded body 450 = base with rotatable interface 457 = base with fixed interface 101 = single manifold 102 = 2 - part manifold 103 = 3 - part manifold 104 = 4 - part manifold 105 = 5 - part manifold 106 = 6 - part manifold 107 = 7 - part manifold 108 = 8 - part manifold 109 = 9 - part manifold 110 = 10 - part manifold 111 = 11 - part manifold 112 = 12 - part manifold 113 = 13 - part manifold 114 = 14 - part manifold 115 = 15 - part manifold |
| A | COIL MATERIAL: A = PPS |
| 6 | SOLENOID DIMENSIONS: 6 = 32x32 |
| B | SOLENOID VOLTAGE: B = 24V 50/60Hz C = 48V 50/60 Hz D = 110V 50/60 Hz E = 230V 50/60 Hz 2 = 12V DC 3 = 24V DC 4 = 48V DC 6 = 110V DC |

2

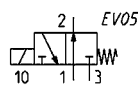
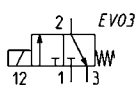
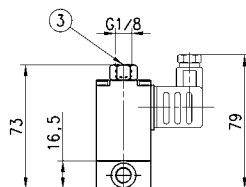
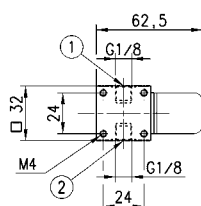
CONTROL


3/2 way NC and NO solenoid valve, G1/8 - Mod. 638 and Mod. 648

These valves are particularly suitable for operating single-acting cylinders or for use as signal valves.

In the mod. 648-150-A6* (NO) connections 1 and 3 are inverted, while the max operating pressure is 6 bar in case a solenoid A6B, A6C, A6D, A6E is chosen.

* = choose the solenoid voltage according to the Coding example table on page 2/1.25.02.

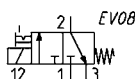
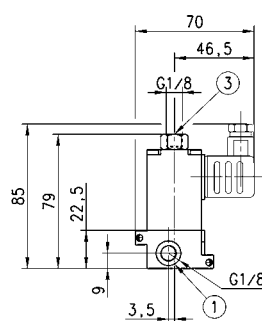
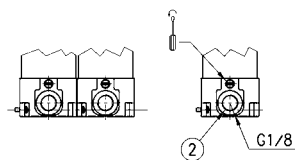
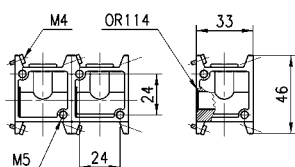


| Mod. | Ports | Function | Orifice Ø (mm) | Qn (NI/min) | Pressure min-max DC (bar) | Pressure min-max AC (bar) | Symbol |
|--------------------|-------|----------|----------------|-------------|---------------------------|---------------------------|--------|
| 638-150-A6* | G1/8 | NC | 2 | 130 | 0 + 10 | - | EV03 |
| 648-150-A6* | G1/8 | NO | 2 | 80 | 0 + 8 | 0 + 6 | EV05 |


3/2 way NC solenoid valve - Mod. 638M and Mod. 63CM

These solenoid valves are equipped with a manual override and are available with G1/8 inlet ports and with G1/8 outlets or with a diameter 4 cartridge. The body is supplied complete with screws and O-ring.

* = choose the solenoid voltage according to the Coding example table on page 2/1.25.02.

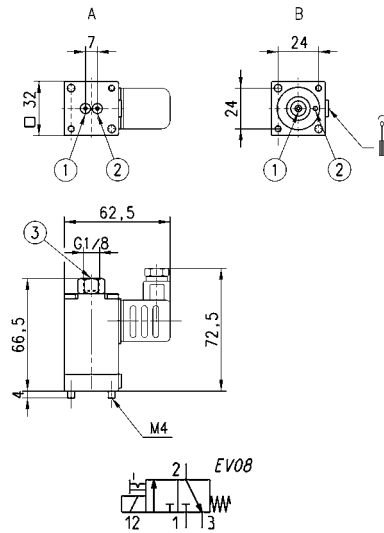


| Mod. | Inlet | Outlet | Function | Orifice Ø (mm) | Qn (NI/min) | Pressure min-max (bar) |
|---------------------|-------|---------------|----------|----------------|-------------|------------------------|
| 638M-101-A6* | G1/8 | G1/8 | NC | 2 | 120 | 0 + 10 |
| 63CM-101-A6* | G1/8 | cartridge Ø 4 | NC | 2 | 108 | 0 + 10 |

3/2 way NC solenoid valve - Mod. 600



These solenoid valves are equipped with an override and are available with two types of interface:
 A = fixed interface
 B = rotatable interface



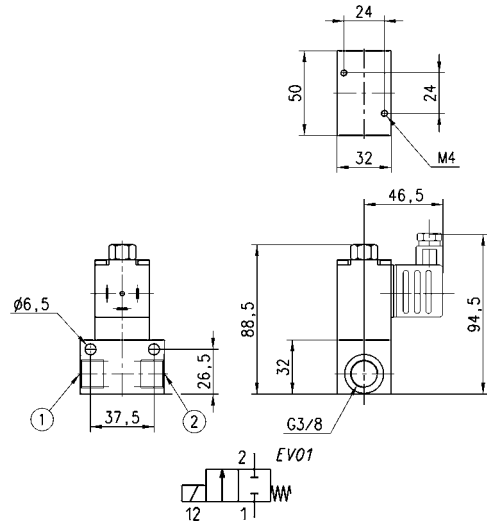
| Mod. | Interface | Function | Orifice Ø (mm) | Qn (NI/min) | Pressure min-max (bar) |
|-------------|-----------|----------|----------------|-------------|------------------------|
| 600-450-A6* | Rotatable | NC | 2 | 106 | 0 + 10 |
| 600-457-A6* | Fixed | NC | 2 | 106 | 0 + 10 |

* = choose the solenoid voltage according to the Coding example table on page 2/1.25.02.

2/2 way solenoid valves, G3/8 - Mod. 623



The 2/2 way solenoid valves with G3/8 ports are available with different orifices.

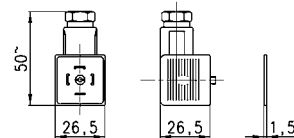


| Mod. | Ports | Function | Orifice Ø (mm) | Qn (NI/min) | Pressure min-max (bar) |
|-------------|-------|----------|----------------|-------------|------------------------|
| 623-15E-A6* | G3/8 | NC | 2,5 | 230 | 0 + 15 |
| 623-15F-A6* | G3/8 | NC | 3 | 333 | 0 + 14 |
| 623-15G-A6* | G3/8 | NC | 4 | 520 | 0 + 6 |

* = choose the solenoid voltage according to the Coding example table on page 2/1.25.02.

** = maximum pressures referred to 50 Hz.

Connector Mod. 124-800 IP65 DIN 43650 (PG9)



| Mod. |
|---------|
| 124-800 |