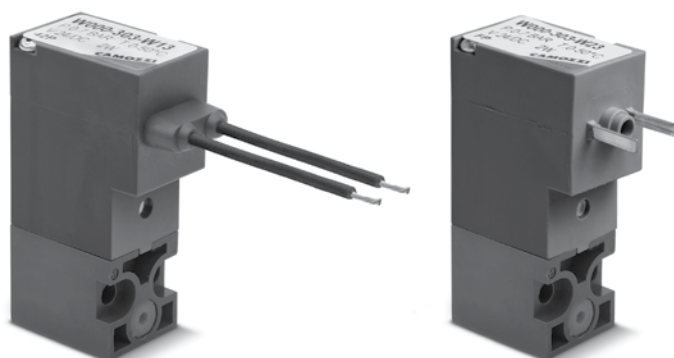


# Directly operated solenoid valves Series W

3/2 way monostable NC and NO, monostable. The solenoid valves can be mounted on a single base (with M5 ports) as well as on manifolds (with M5 ports or cartridge  $\varnothing$  3 and 4).



- » Electrical connection according to DIN 43650
- » High flow rate

Note: to choose the manifolds to be used see the manifolds for Series P on page 2/1.15.04 .

The Series W directly operated solenoid valves are available as 3/2 ways either NC or NO. Both versions can be mounted on single sub-bases or manifolds and they are equipped with a manual override which make the plants setting easier.

## GENERAL DATA

Valve functions	3/2 NC - NO
Construction	poppet type
Mounting	by means of screws
Materials	body = technopolymer poppet = PU (FKM on demand) seals = NBR (FKM on demand) others = stainless steel
Installation	in any position
Operating temperature	0 ÷ 50°C
Operating pressure	see table
Nominal flow rate (6 bar $\Delta P$ 1)	$\varnothing$ 1,5 Qn 35 NI/min $\varnothing$ 1,1 Qn 25 NI/min $\varnothing$ 0,8 Qn 14 NI/min
Fluid	filtered air, without lubrication, inert gas. If lubricated air is used, it is recommended to use ISOVG32 oil. Once applied the lubrication should never be interrupted.
Voltage	see the coding example
Power consumption	2W, 1W (24V only)
Voltage tolerances	$\pm$ 10%
Class of insulation	class F
Protection class	IP65 with connector DIN 43650
Duty cycle	ED 100%

## CODING EXAMPLE

W	0	00	-	3	0	3	-	W	2	3
---	---	----	---	---	---	---	---	---	---	---

<b>W</b>	SERIES
<b>0</b>	BODY DESIGN: 0 = single sub-base (only M5) or interface 1 = single manifold 2 = double manifold
<b>00</b>	NUMBER OF POSITIONS: 00 = interface 01 = single base (M5 only) 02 + 99 = manifold number of positions
<b>3</b>	NUMBER OF WAYS - FUNCTIONS: 0 = manifold or single sub-base 3 = 3 way NC 4 = 3 way NO 5 = 3 way NC electric part revolved by 180° 6 = 3 way NO electric part revolved by 180°
<b>0</b>	VALVE PORTS: 0 = interface  MANIFOLD PORTS (for Series W, P and PN): 2 = M5 side 3 = tube ø 3 side 4 = tube ø 4 side 6 = M5 rear ports 7 = ø 3 tube rear ports 8 = ø 4 tube rear ports
<b>3</b>	NOMINAL DIAMETER - MAX PRESSURE 1 = ø 0,8 (1W)      10 bar (NC) 24V only 3 = ø 1,5 (2W)      7 bar (NC) 5 bar (NO) 5 = ø 1,1 NC (2W)    10 bar (NC) ø 0,9 NO (2W)    10 bar (NO)
<b>W</b>	MATERIALS: W = PBT body, PU poppet F = PBT body, FKM poppet
<b>2</b>	TYPE OF CONNECTION: 1 = cables 300mm (24V DC only) 2 = 2 faston (24V - 48V DC)
<b>3</b>	SOLENOID VOLTAGE: 3 = 24V DC 4 = 48V DC

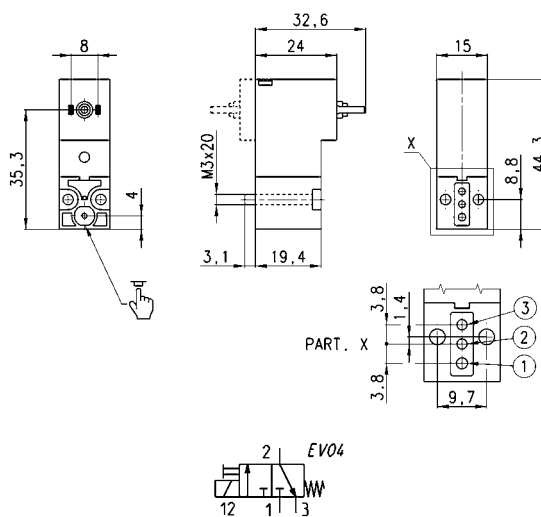
2

CONTROL



### 3/2 way NC solenoid valve, 2 faston (24V DC - 48V DC)

Supplied with:  
1x interface seal  
2x screws

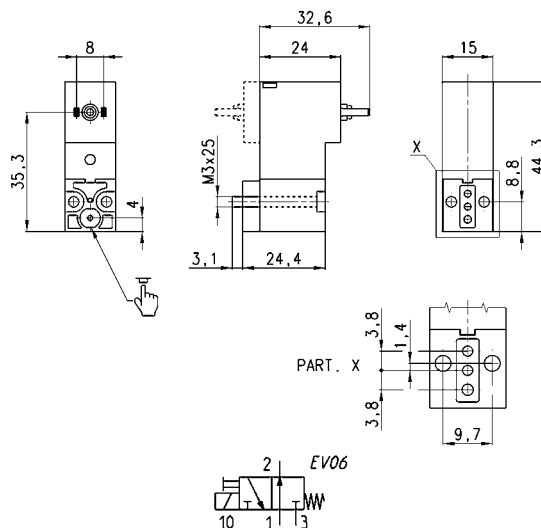


Mod.	Orifice Ø (mm)	Qn (NI/min)	Pressure min-max (bar)
W000-305-W23	1.1	25	0 ÷ 10
W000-303-W23	1.5	35	0 ÷ 7
W000-305-W24	1.1	25	0 ÷ 10
W000-303-W24	1.5	35	0 ÷ 7



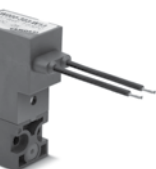
### 3/2 way NO solenoid valve, 2 faston (24V DC - 48V DC)

Supplied with:  
1x interface for NO version  
(connections 1 and 3 are inverted)  
2x interface seals  
2x screws



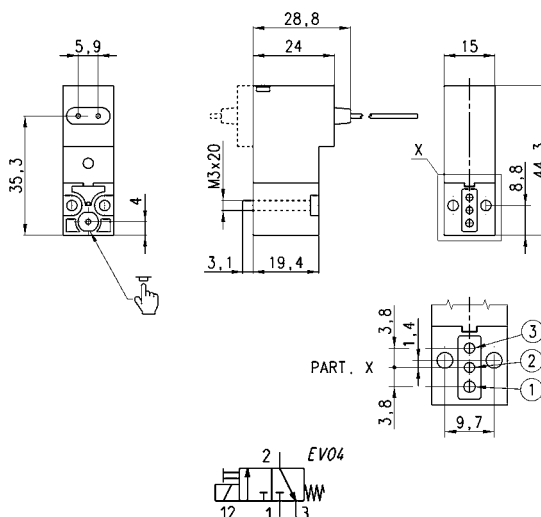
Mod.	Orifice Ø (mm)	Qn (NI/min)	Pressure min-max (bar)
W000-405-W23	0.9	15	0 ÷ 10
W000-403-W23	1.5	23	0 ÷ 5
W000-405-W24	0.9	15	0 ÷ 10
W000-403-W24	1.5	23	0 ÷ 5

The interface for NO version is required if the valve is mounted on a manifold. In case of a single or customised base, on the contrary, it is necessary to use screws M1,6x16 (mod. K303/61).



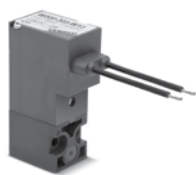
### 3/2 way NC solenoid valve with cables of 300mm (24V DC only)

Supplied with:  
1x interface seal  
2x screws

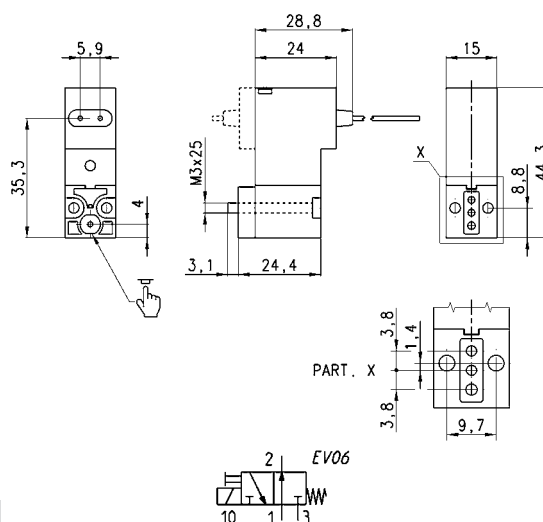


Mod.	Orifice Ø (mm)	Qn (NI/min)	Pressure min-max (bar)
W000-305-W13	1.1	25	0 ÷ 10
W000-303-W13	1.5	35	0 ÷ 7

### 3/2 way NO solenoid valve with cables of 300mm (24V DC only)



Supplied with:  
 1x interface for NO version  
 (connections 1 and 3 are inverted)  
 2x interface seals  
 2x screws



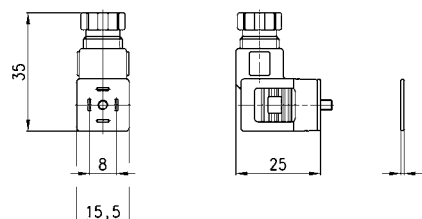
Mod.	Orifice Ø (mm)	Qn (NI/min)	Pressure min-max (bar)
<b>W000-405-W13</b>	0.9	15	0 ÷ 10
<b>W000-403-W13</b>	1.5	25	0 ÷ 5

The interface for NO version is required if the valve is mounted on a manifold. In case of a single or

customised base, on the contrary, it is necessary to use screws M1,6x16 (mod. K303/61).

### Connector Mod. 126-800 DIN 43650 pin spacing 8 mm

To be used in all DC valves with voltages from 6 to 110 V.



Mod.

**126-800**